

PROJECT

PUBLIC AREA RENOVATION OF HOLIDAY INN EXPRESS & SUITES

CHARLOTTE-CONCORD-I-85

LOCATION #: 8446

InnCODE: CNCNC

CONTACTS

OWNER:
MILESH PATEL
VINTA GROUP
ADDRESS
CITY, STATE ZIP
MILESH.PATEL@VINTAHOTELS.COM
PH: 919.395.2679

DESIGN / FFA PURCHASING:
SARAH LAIRSEY
CARVER & ASSOCIATES
153 WEST ELLIS ROAD, SUITE A
GRIFFIN, GA 30223
SLAIRSEY@CARVERASSOC.COM
PH: 770-233-9799

VICINITY MAP



HOLIDAY INN EXPRESS & SUITES
7772 GATEWAY LANE NW
CONCORD, NC 28027

DESCRIPTION: PIP

SHEET INDEX

- ID.T01 TITLE SHEET
- ID1.01 REFERENCE PLAN | ENLARGED FIRST FLOOR
- ID2.01 REFLECTED CEILING PLAN | LOBBY
- ID2.02 REFLECTED CEILING PLAN | BREAKFAST
- ID2.03 REFLECTED CEILING PLAN | MEETING ROOM
- ID2.04 REFLECTED CEILING PLAN | FITNESS & PUBLIC RESTROOM
- ID2.05 REFLECTED CEILING PLAN | UPPER CORRIDOR & ELEV. LOBBY
- ID3.01 FINISH PLAN | LOBBY
- ID3.02 FINISH PLAN | BREAKFAST
- ID3.03 FINISH PLAN | MEETING ROOM
- ID3.04 FINISH PLAN | FITNESS & PUBLIC RESTROOM
- ID3.05 FINISH PLAN | UPPER CORRIDOR & ELEV. LOBBY
- ID4.21 FURNITURE PLAN | LOBBY
- ID4.22 FURNITURE PLAN | BREAKFAST
- ID4.23 FURNITURE PLAN | MEETING ROOM
- ID4.24 FURNITURE PLAN | FITNESS & PUBLIC RESTROOM
- ID4.25 FURNITURE PLAN | UPPER CORRIDOR & ELEV. LOBBY

GENERAL NOTES

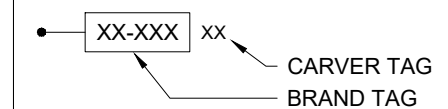
1. ALL CONSTRUCTION SHALL COMPLY WITH ALL APPLICABLE LOCAL, STATE AND FEDERAL AUTHORITIES HAVING JURISDICTION, INCLUDING ADA.
2. ALL CONSTRUCTION SHALL COMPLY WITH CURRENT HOTEL BRAND STANDARDS.
3. CONTRACTOR SHALL PROTECT ALL IN-PLACE CONSTRUCTION, LANDSCAPING, PAVING, UTILITIES, ETC. FROM DAMAGE DURING INTERIOR BUILDOUT / FFE INSTALLATION. ALL DAMAGED CONSTRUCTION TO BE RESTORED TO ORIGINAL CONDITION.
4. WHERE EXISTING WALLS, CEILINGS AND FLOORS ARE MODIFIED AND/OR ADDED ON TO; NEW WALLS, CEILINGS, FLOORS AND BASE MUST BE CONSTRUCTED IN A MANNER TO GIVE A SEAMLESS AND COORDINATED APPEARANCE.
5. THE DESIGNER HAS RELIED ON LIMITED EXISTING DOCUMENTATION OF THE EXISTING BUILDING FOR THE PREPARATION OF THESE DRAWINGS. THEREFORE THE CONTRACTOR SHALL INVESTIGATE ALL ASPECTS AND SCOPE OF THE PROJECT AND SHALL NOTIFY THE DESIGNER OF ALL CONDITIONS REQUIRING MODIFICATIONS PRIOR TO PROCEEDING WITH WORK, OR SHALL BE RESPONSIBLE FOR ANY DISCREPANCIES BETWEEN THE DESIGN INTENT AND EXISTING CONDITIONS.
6. DO NOT SCALE DRAWINGS. USE DIMENSIONS PROVIDED ON DRAWINGS. FOR ALL DIMENSIONS PROVIDED, CONTRACTOR SHALL COORDINATE WITH EXISTING CONDITIONS AS MENTIONED ABOVE.
7. ALL DIMENSIONS ARE TO FINISH FACE OF WALL BOARD AND/OR INDICATED MATERIAL U.N.O.
8. DIMENSIONS SHOWN ARE FOR REFERENCE AND TO COMMUNICATE CRITICAL AREAS FOR DESIGN INTENT.
9. ALL MILLWORK ITEMS SHALL BE SUBMITTED IN SHOP DRAWING FORMAT FOLLOWING MILLWORK CONTRACTORS FIELD VERIFICATION OF DIMENSIONS. CONTRACTOR SHALL SUBMIT (2) COPIES OF MILLWORK AND WOOD SAMPLES TO DESIGNER FOR REVIEW AND APPROVAL.
10. ALL PENETRATIONS OF DUCTWORK, CONDUIT, PIPING AND SIMILAR WORK THROUGH FIRE RATED ASSEMBLIES SHALL BE SEALED TO MAINTAIN THE RATING OF THE ASSEMBLY WITH A UL LISTED MATERIAL.
11. ALL ELECTRICAL EQUIPMENT INSTALLED IN THE RETURN AIR PLENUM SHALL BE APPROVED BY THE APPROPRIATE GOVERNING AGENCY FOR COMPLIANCE WITH CODE.

KEYS AND LEGENDS

ELECTRICAL SYMBOL LEGEND

- Ⓢ SWITCH
- Ⓢ₃ 3-WAY SWITCH
- Ⓢₓ FAN SWITCH
- Ⓞ SINGLE OUTLET
- Ⓞₓ DUPLEX OUTLET
- Ⓞₓᵀ QUAD OUTLET
- Ⓞₓᵀᵀ GFI DUPLEX OUTLET
- Ⓞₓᵀᵀᵀ GFI QUAD OUTLET
- Ⓞₓᵀᵀᵀ FLOOR DUPLEX OUTLET
- Ⓞₓᵀᵀᵀ FLOOR QUAD OUTLET
- ⓄⓂ JUNCTION BOX
- Ⓞₓ THERMOSTAT
- Ⓜ DATA JACK
- Ⓜ FLOOR DATA JACK
- Ⓜ TELEPHONE AND DATA JACK
- Ⓜ FLOOR TELEPHONE AND DATA JACK
- Ⓜ TV OUTLET
- Ⓜ FLOOR TV OUTLET
- Ⓜ WIRELESS ACCESS POINT

FURNITURE KEY



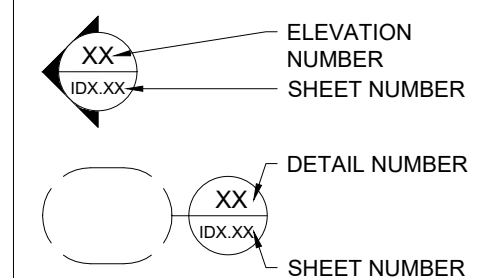
FINISH KEY

W	WALL
B	BASE
F	FLOOR

REFLECTED CEILING KEY



SYMBOL LEGEND



CARVER & ASSOCIATES
HOSPITALITY CONTRACT SERVICES
153 WEST ELLIS ROAD
GRIFFIN, GEORGIA 30223
770.233.9799
CARVERASSOC.COM

HOLIDAY INN EXPRESS & SUITES
CHARLOTTE-CONCORD I-85
7772 GATEWAY LANE NW, CONCORD, NC 28027
InnCODE: CNCNC

PROJECT:

DRAWN BY: SL

DATE: 03.27.26

REV. 1 DATE: --

REV. 2 DATE: --

REV. 3 DATE: --

REV. 4 DATE: --

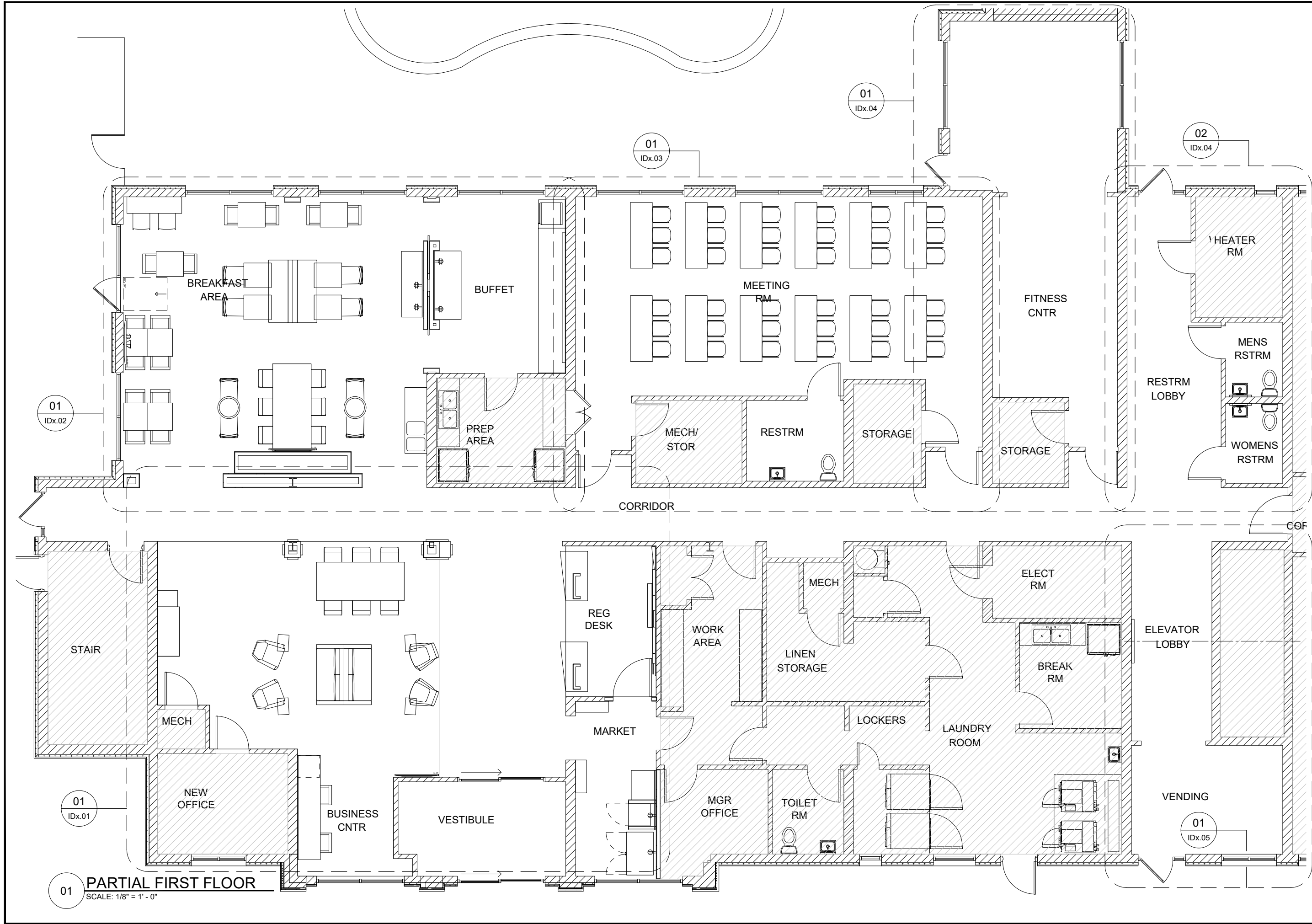
SHEET TITLE:

TITLE SHEET

SHEET NO.:

ID.T01

PHASE: BRAND SUBMITTAL



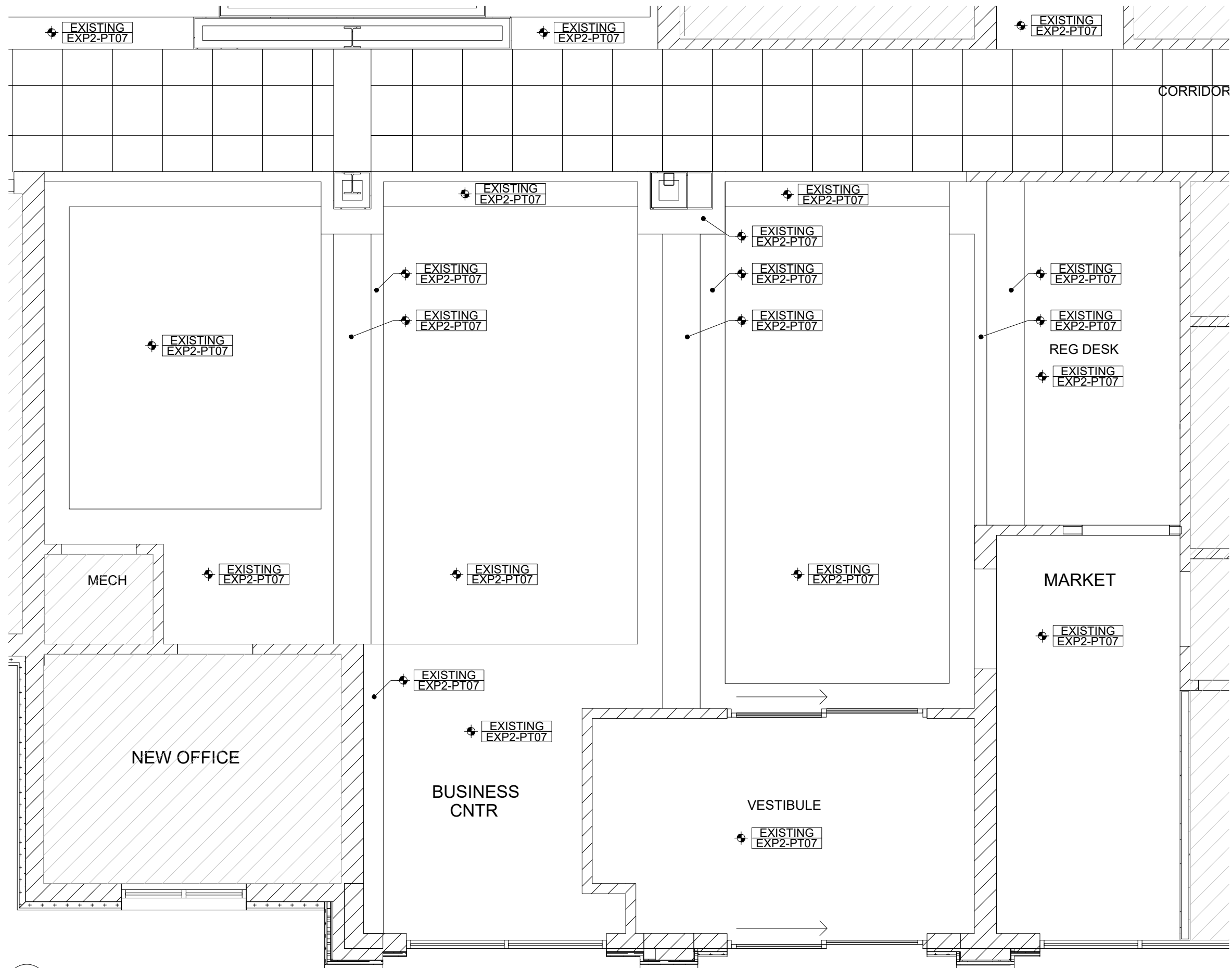
CARVER & ASSOCIATES
 HOSPITALITY CONTRACT SERVICES
 153 WEST ELLIS ROAD
 GRIFFIN, GEORGIA 30223
 770.233.9799
 CARVERASSOC.COM

PROJECT:
HOLIDAY INN EXPRESS & SUITES
CHARLOTTE-CONCORD I-85
 7772 GATEWAY LANE NW, CONCORD, NC 28027
 InnCODE: CNCNC

DRAWN BY: SL
DATE: 03.27.26
REV. 1 DATE: --
REV. 2 DATE: --
REV. 3 DATE: --
REV. 4 DATE: --

SHEET TITLE:
REFERENCE PLAN

SHEET NO.:
ID1.01
PHASE:
 BRAND SUBMITTAL



01 LOBBY
SCALE: 1/4" = 1' - 0"



CARVER & ASSOCIATES
HOSPITALITY CONTRACT SERVICES
153 WEST ELLIS ROAD
GRIFFIN, GEORGIA 30223
770.233.9799
CARVERASSOC.COM

PROJECT: **HOLIDAY INN EXPRESS & SUITES**
CHARLOTTE-CONCORD I-85
7772 GATEWAY LANE NW., CONCORD, NC 28027
InnCODE: CNCNC

DRAWN BY:	SL
DATE:	03.27.26
REV. 1 DATE:	--
REV. 2 DATE:	--
REV. 3 DATE:	--
REV. 4 DATE:	--

SHEET TITLE:
REFLECTED CEILING PLAN

SHEET NO.:
ID2.01

PHASE:
BRAND SUBMITTAL



CARVER & ASSOCIATES
 HOSPITALITY CONTRACT SERVICES
 153 WEST ELLIS ROAD
 GRIFFIN, GEORGIA 30223
 770.233.9799
 CARVERASSOC.COM

PROJECT:
**HOLIDAY INN EXPRESS
 & SUITES**
CHARLOTTE-CONCORD I-85
 7772 GATEWAY LANE NW., CONCORD, NC 28027
 InnCODE: CNCNC

DRAWN BY: SL

DATE: 03.27.26

REV. 1 DATE: --

REV. 2 DATE: --

REV. 3 DATE: --

REV. 4 DATE: --

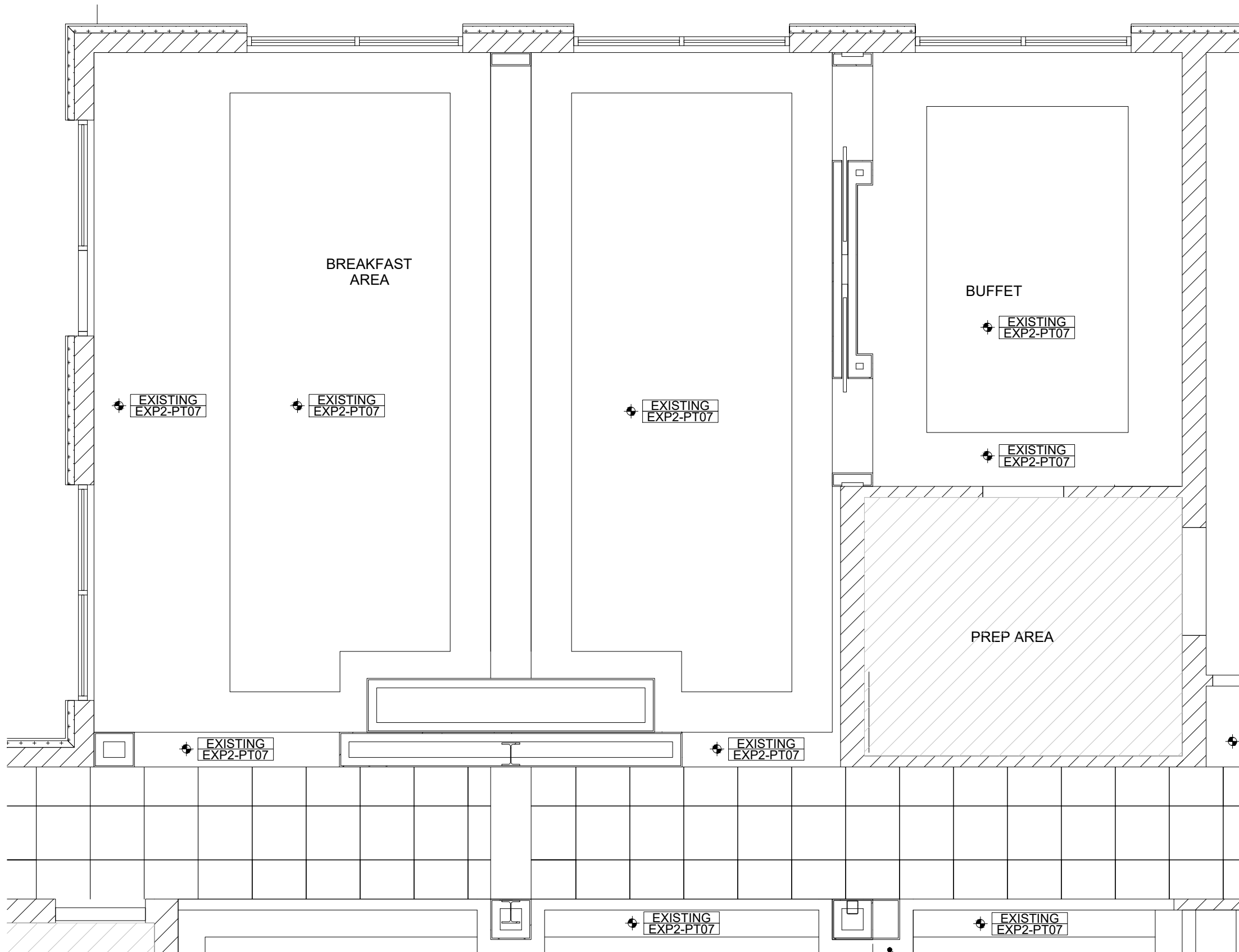
SHEET TITLE:

**REFLECTED
 CEILING PLAN**

SHEET NO.:

ID2.02

PHASE:
 BRAND SUBMITTAL



01 **BREAKFAST AREA**
 SCALE: 1/4" = 1' - 0"



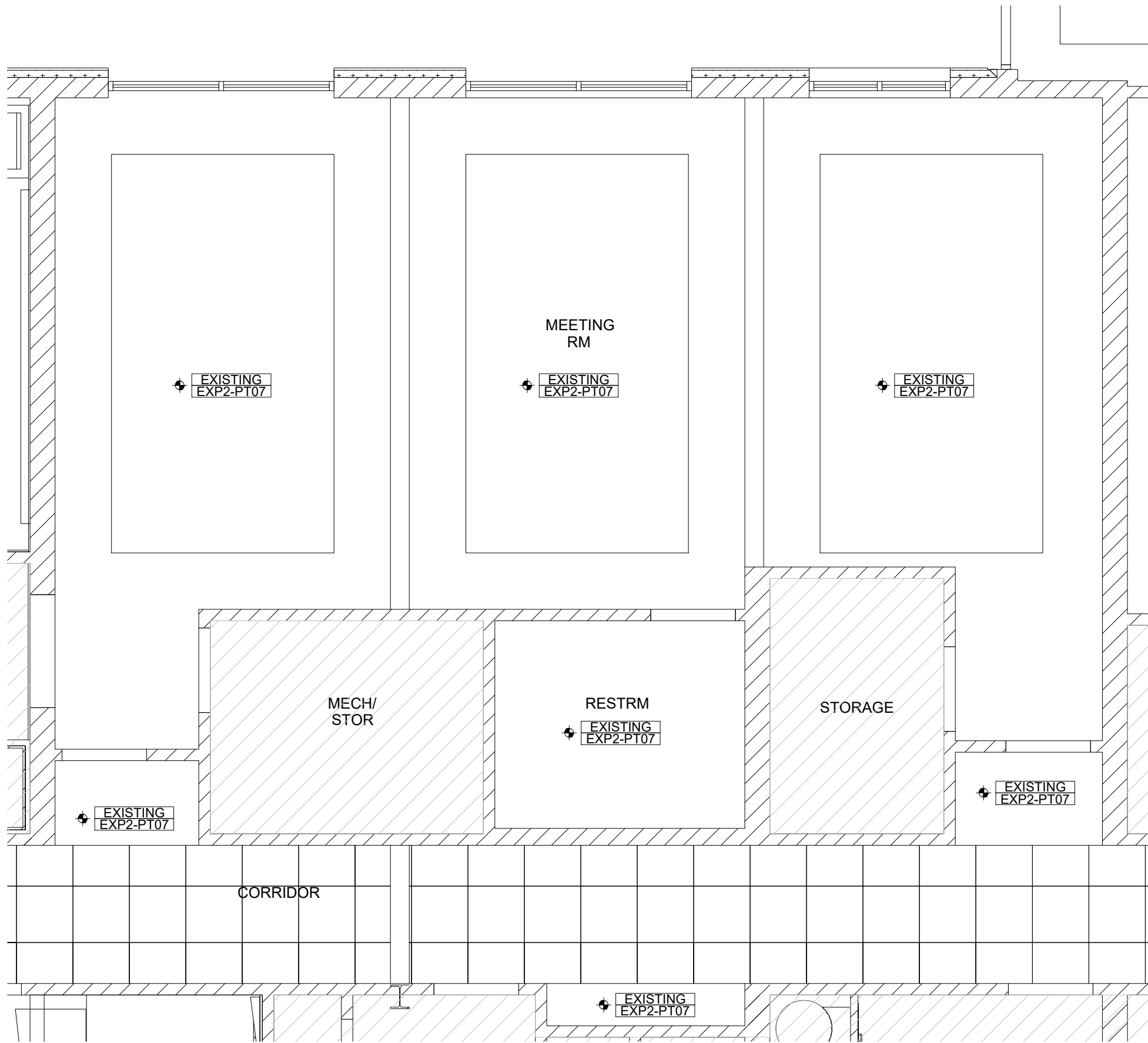
CARVER & ASSOCIATES
 HOSPITALITY CONTRACT SERVICES
 153 WEST ELLIS ROAD
 GRIFFIN, GEORGIA 30223
 770.233.9799
 CARVERASSOC.COM

PROJECT: **HOLIDAY INN EXPRESS & SUITES**
CHARLOTTE-CONCORD I-85
 7772 GATEWAY LANE NW., CONCORD, NC 28027
 InnCODE: CNCNC

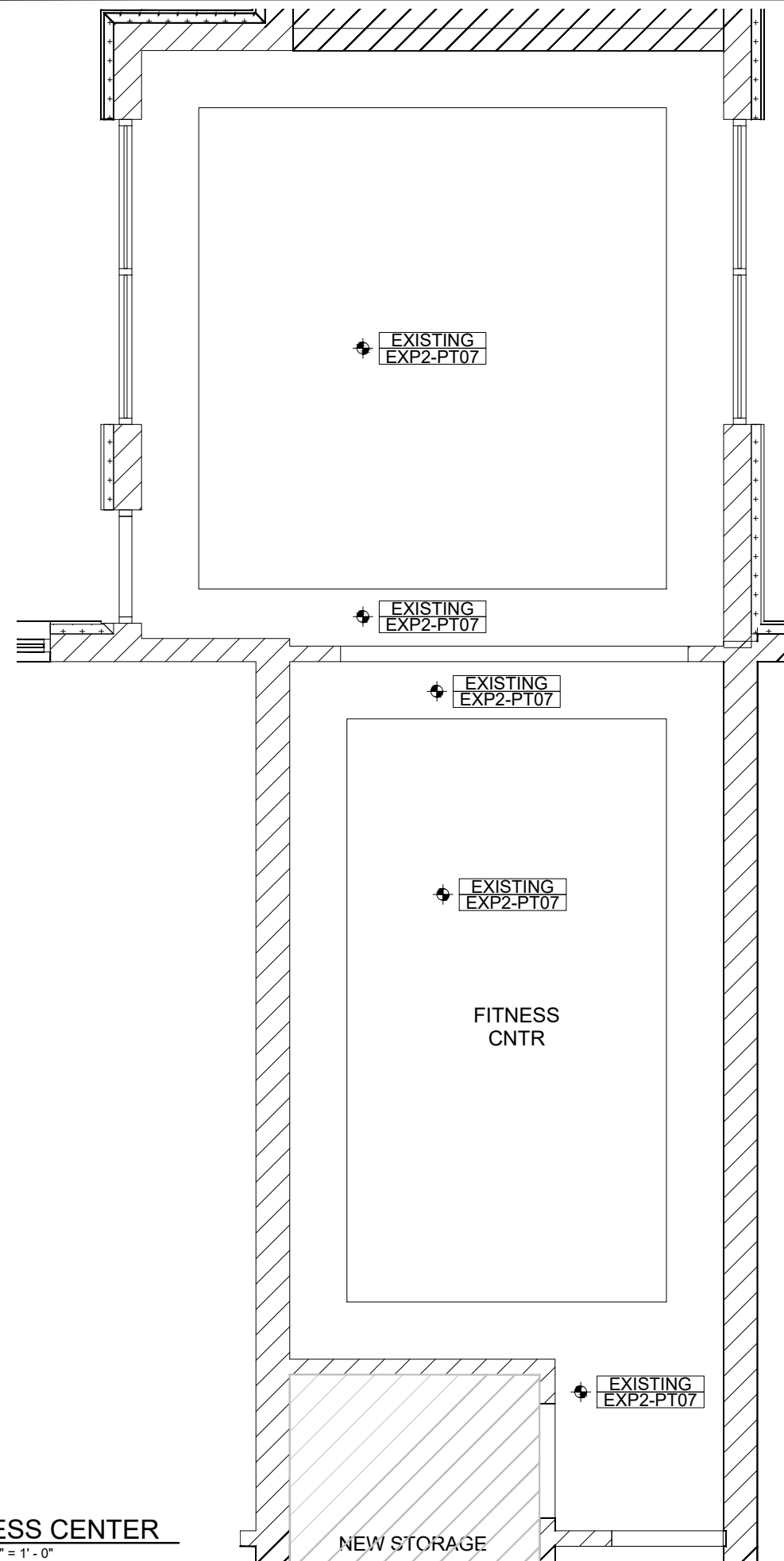
DRAWN BY: SL
 DATE: 03.27.26
 REV. 1 DATE: --
 REV. 2 DATE: --
 REV. 3 DATE: --
 REV. 4 DATE: --
 SHEET TITLE:

REFLECTED CEILING PLAN

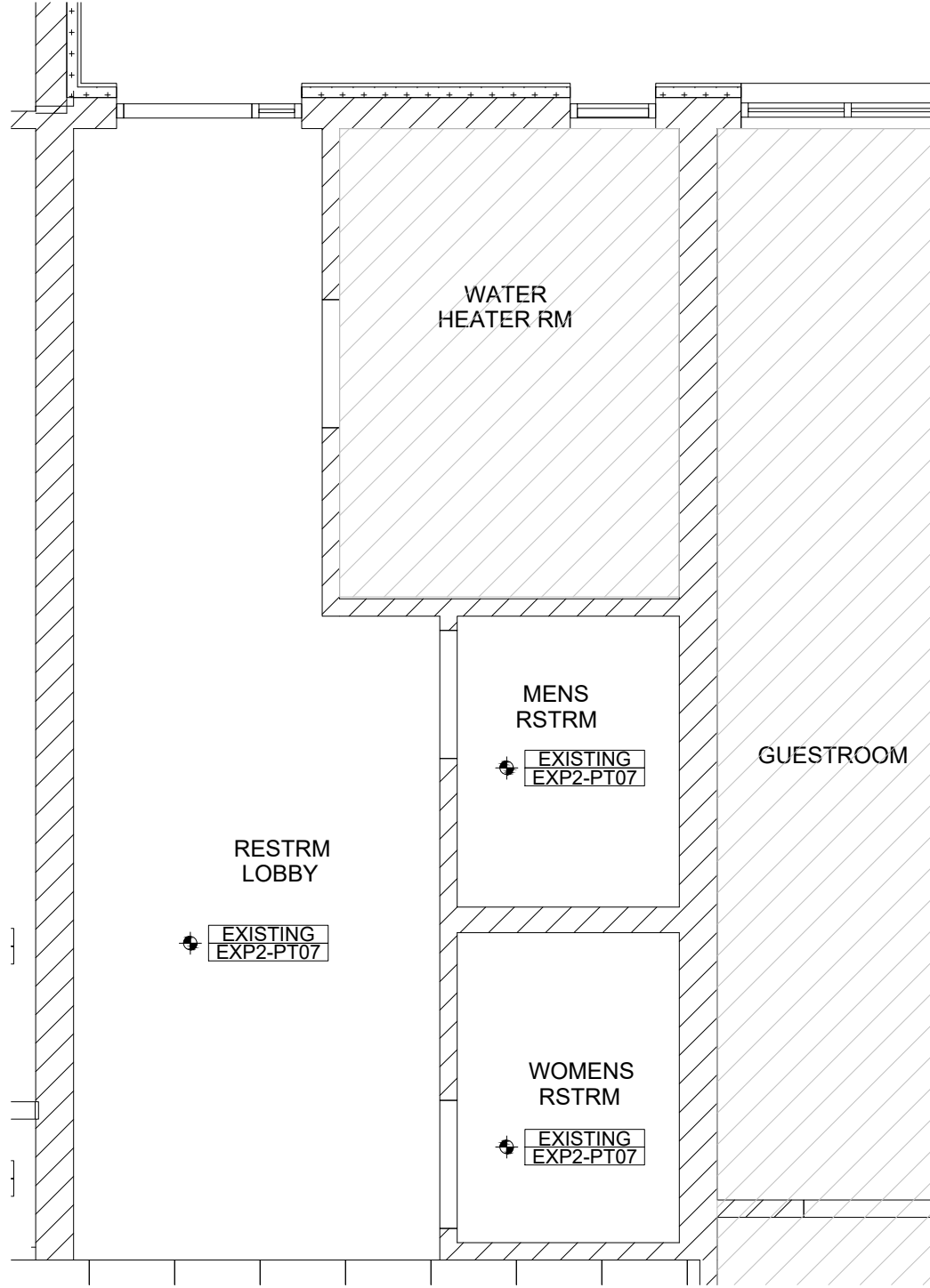
SHEET NO.: **ID2.03**
 PHASE: BRAND SUBMITTAL



01 MEETING ROOM
 SCALE: 1/4" = 1' - 0"



01 **FITNESS CENTER**
SCALE: 1/4" = 1' - 0"



02 **PUBLIC RESTROOM**
SCALE: 1/4" = 1' - 0"



CARVER & ASSOCIATES
HOSPITALITY CONTRACT SERVICES
153 WEST ELLIS ROAD
GRIFFIN, GEORGIA 30223
770.233.9799
CARVERASSOC.COM

PROJECT: **HOLIDAY INN EXPRESS & SUITES**
CHARLOTTE-CONCORD I-85
7772 GATEWAY LANE NW, CONCORD, NC 28027
InnCODE: CNCNC

DRAWN BY:	SL
DATE:	03.27.26
REV. 1 DATE:	--
REV. 2 DATE:	--
REV. 3 DATE:	--
REV. 4 DATE:	--
SHEET TITLE:	

REFLECTED CEILING PLAN

SHEET NO.:
ID2.04

PHASE:
BRAND SUBMITTAL



CARVER & ASSOCIATES
 HOSPITALITY CONTRACT SERVICES
 153 WEST ELLIS ROAD
 GRIFFIN, GEORGIA 30223
 770.233.9799
 CARVERASSOC.COM

PROJECT: **HOLIDAY INN EXPRESS & SUITES**
CHARLOTTE-CONCORD I-85
 7772 GATEWAY LANE NW., CONCORD, NC 28027
 InnCODE: CNCNC

DRAWN BY: SL

DATE: 03.27.26

REV. 1 DATE: --

REV. 2 DATE: --

REV. 3 DATE: --

REV. 4 DATE: --

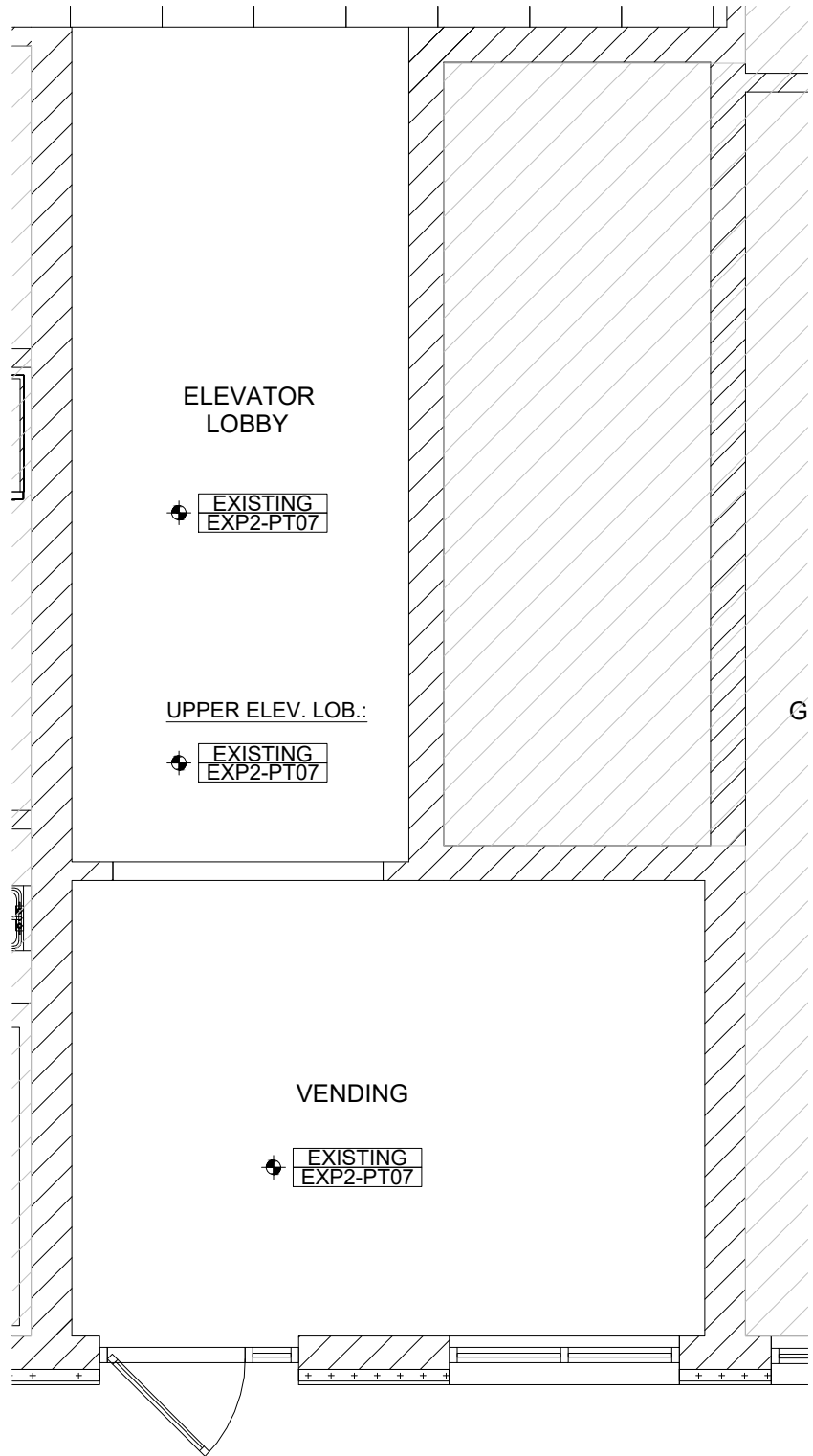
SHEET TITLE:

REFLECTED CEILING PLAN

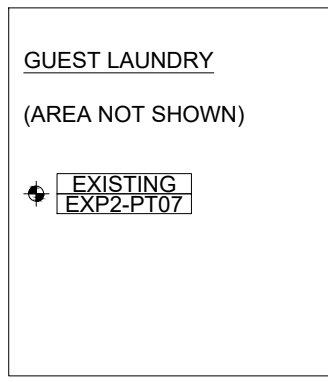
SHEET NO.:

ID2.05

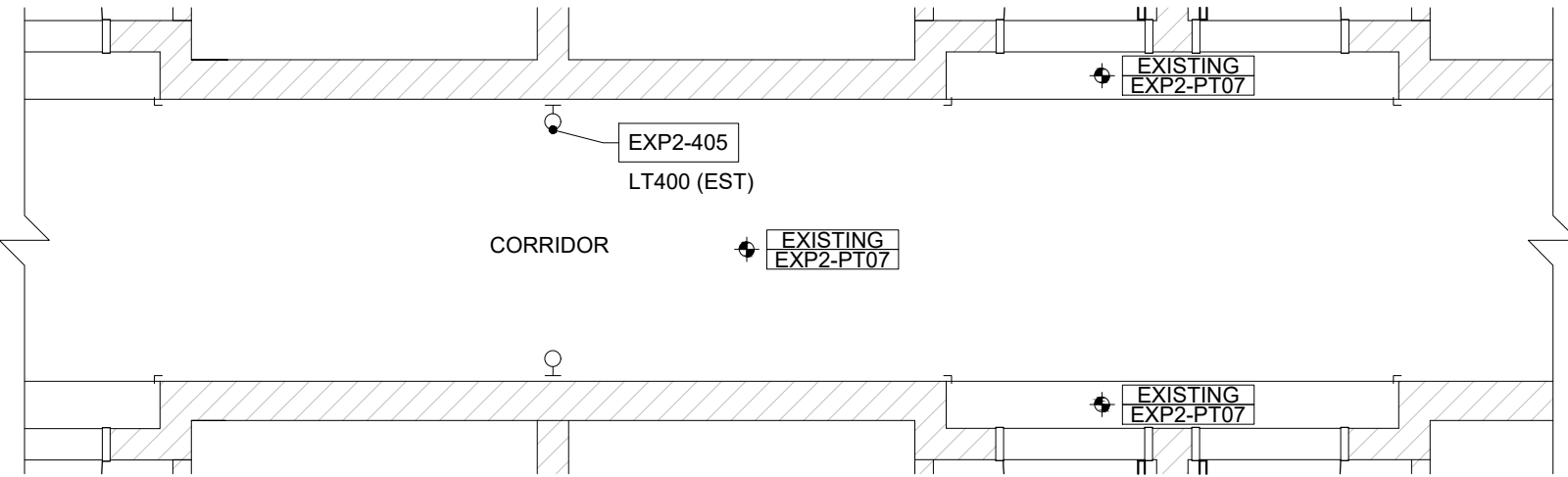
PHASE: **BRAND SUBMITTAL**



01 ELEVATOR LOBBY
 SCALE: 1/4" = 1' - 0"



03 GUEST LAUNDRY
 SCALE: 1/4" = 1' - 0"



02 CORRIDOR
 SCALE: 1/4" = 1' - 0"



CARVER & ASSOCIATES
 HOSPITALITY CONTRACT SERVICES
 153 WEST ELLIS ROAD
 GRIFFIN, GEORGIA 30223
 770.233.9799
 CARVERASSOC.COM

PROJECT: **HOLIDAY INN EXPRESS & SUITES**
CHARLOTTE-CONCORD I-85
 7772 GATEWAY LANE NW, CONCORD, NC 28027
 InnCODE: CNCNC

DRAWN BY:	SL
DATE:	03.27.26
REV. 1 DATE:	--
REV. 2 DATE:	--
REV. 3 DATE:	--
REV. 4 DATE:	--

FINISH PLAN

SHEET NO.:
ID3.01

PHASE:
 BRAND SUBMITTAL

W	EXP2-WC02	REFINISH EXISTING WOOD BASE
B	EXP2-PT30	
F	EXP2-T01	

W	EXP2-WC02	REFINISH EXISTING WOOD BASE
B	EXP2-PT30	
F	EXP2-CPT01	

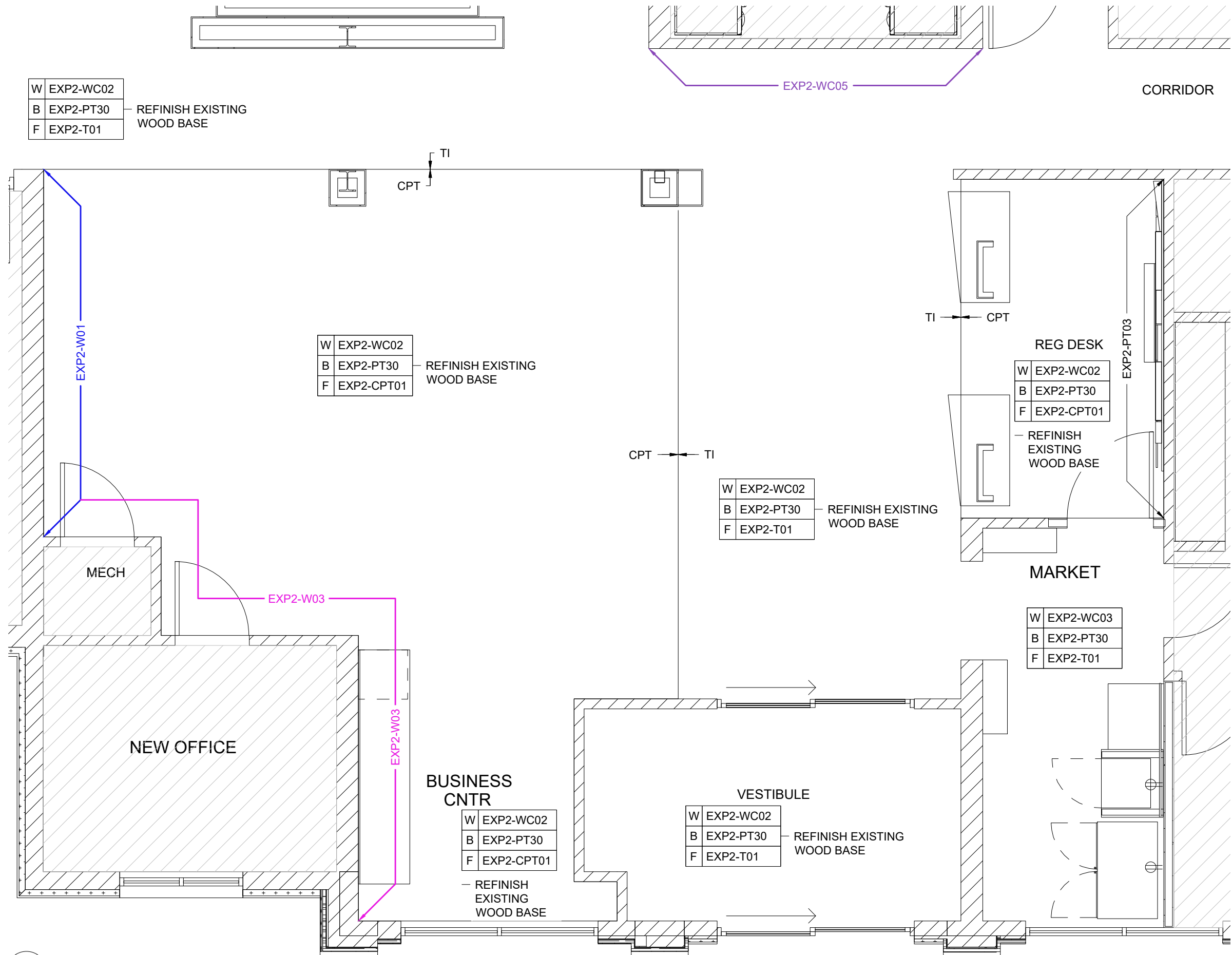
W	EXP2-WC02	REFINISH EXISTING WOOD BASE
B	EXP2-PT30	
F	EXP2-T01	

W	EXP2-WC02	REFINISH EXISTING WOOD BASE
B	EXP2-PT30	
F	EXP2-CPT01	

W	EXP2-WC03	REFINISH EXISTING WOOD BASE
B	EXP2-PT30	
F	EXP2-T01	

W	EXP2-WC02	REFINISH EXISTING WOOD BASE
B	EXP2-PT30	
F	EXP2-CPT01	

W	EXP2-WC02	REFINISH EXISTING WOOD BASE
B	EXP2-PT30	
F	EXP2-T01	



01 **LOBBY**
 SCALE: 1/4" = 1' - 0"



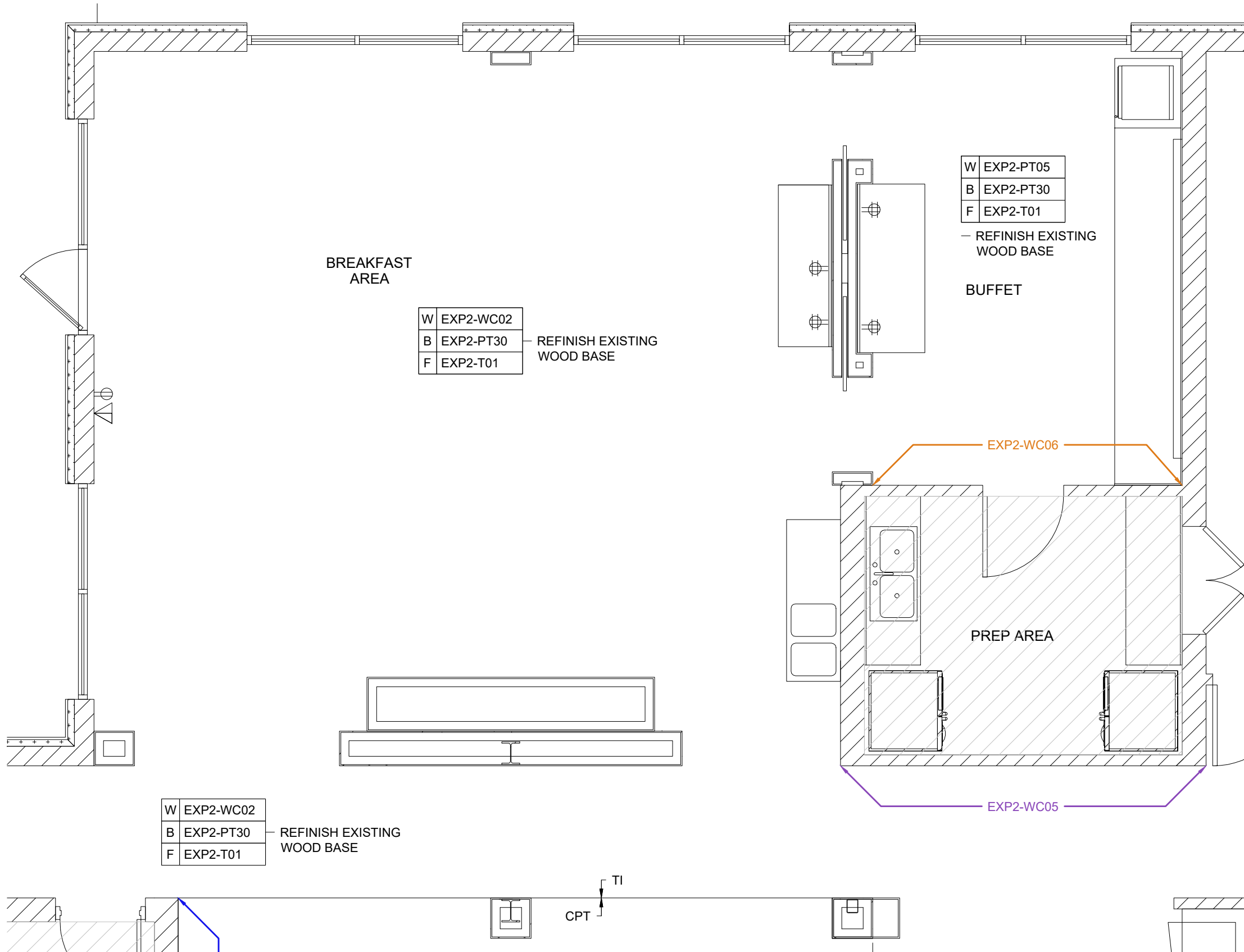
CARVER & ASSOCIATES
 HOSPITALITY CONTRACT SERVICES
 153 WEST ELLIS ROAD
 GRIFFIN, GEORGIA 30223
 770.233.9799
 CARVERASSOC.COM

PROJECT:
**HOLIDAY INN EXPRESS
 & SUITES**
CHARLOTTE-CONCORD I-85
 7772 GATEWAY LANE NW., CONCORD, NC 28027
 InnCODE: CNCNC

DRAWN BY: SL
 DATE: 03.27.26
 REV. 1 DATE: --
 REV. 2 DATE: --
 REV. 3 DATE: --
 REV. 4 DATE: --
 SHEET TITLE:

FINISH PLAN

SHEET NO.:
ID3.02
 PHASE:
 BRAND SUBMITTAL



01 **BREAKFAST AREA**
 SCALE: 1/4" = 1' - 0"



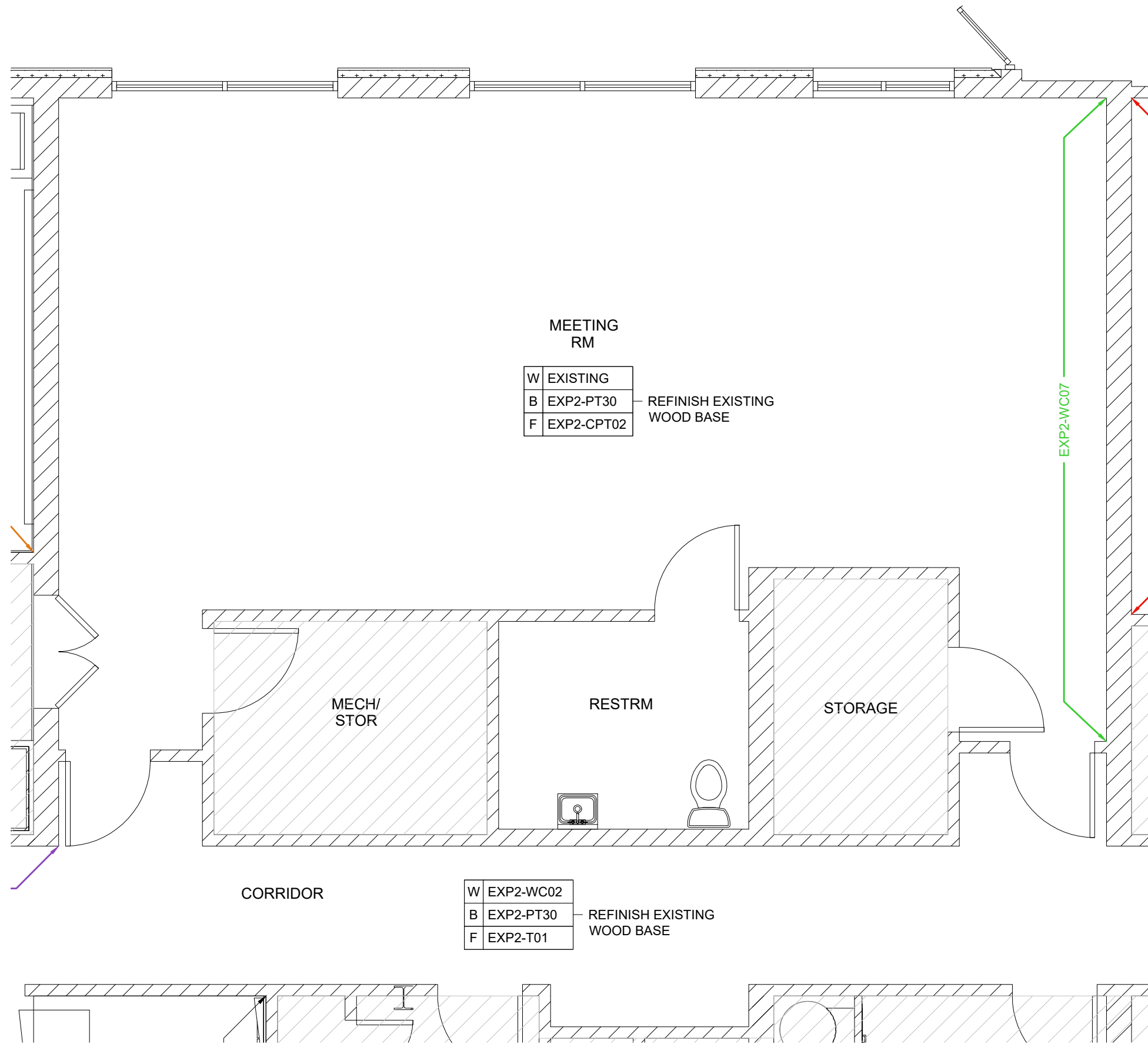
CARVER & ASSOCIATES
 HOSPITALITY CONTRACT SERVICES
 153 WEST ELLIS ROAD
 GRIFFIN, GEORGIA 30223
 770.233.9799
 CARVERASSOC.COM

PROJECT: **HOLIDAY INN EXPRESS & SUITES**
CHARLOTTE-CONCORD I-85
 7772 GATEWAY LANE NW., CONCORD, NC 28027
 InnCODE: CNCNC

DRAWN BY: SL
 DATE: 03.27.26
 REV. 1 DATE: --
 REV. 2 DATE: --
 REV. 3 DATE: --
 REV. 4 DATE: --
 SHEET TITLE:

FINISH PLAN

SHEET NO.:
ID3.03
 PHASE:
 BRAND SUBMITTAL



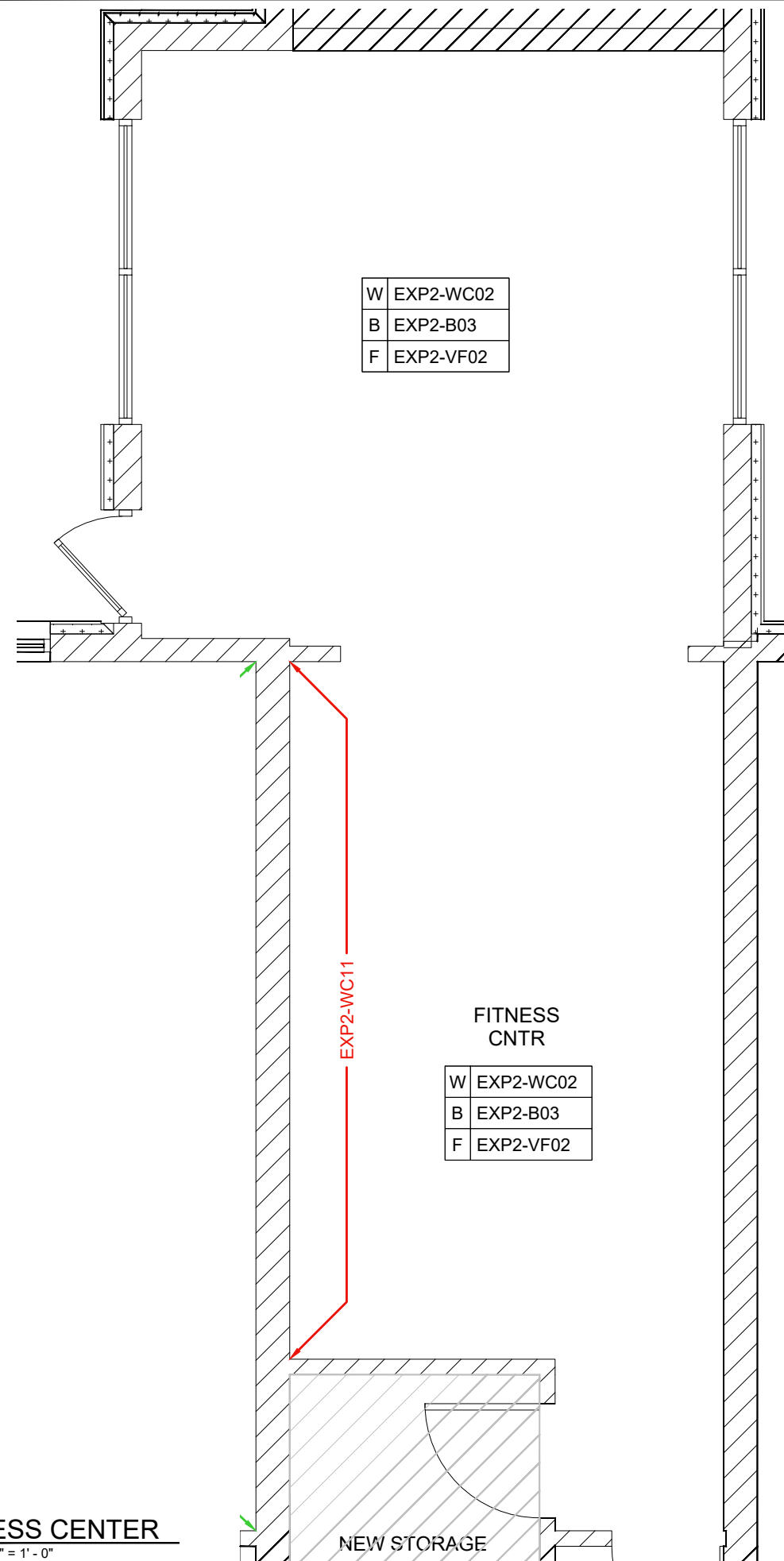
MEETING RM

W	EXISTING	
B	EXP2-PT30	REFINISH EXISTING WOOD BASE
F	EXP2-CPT02	

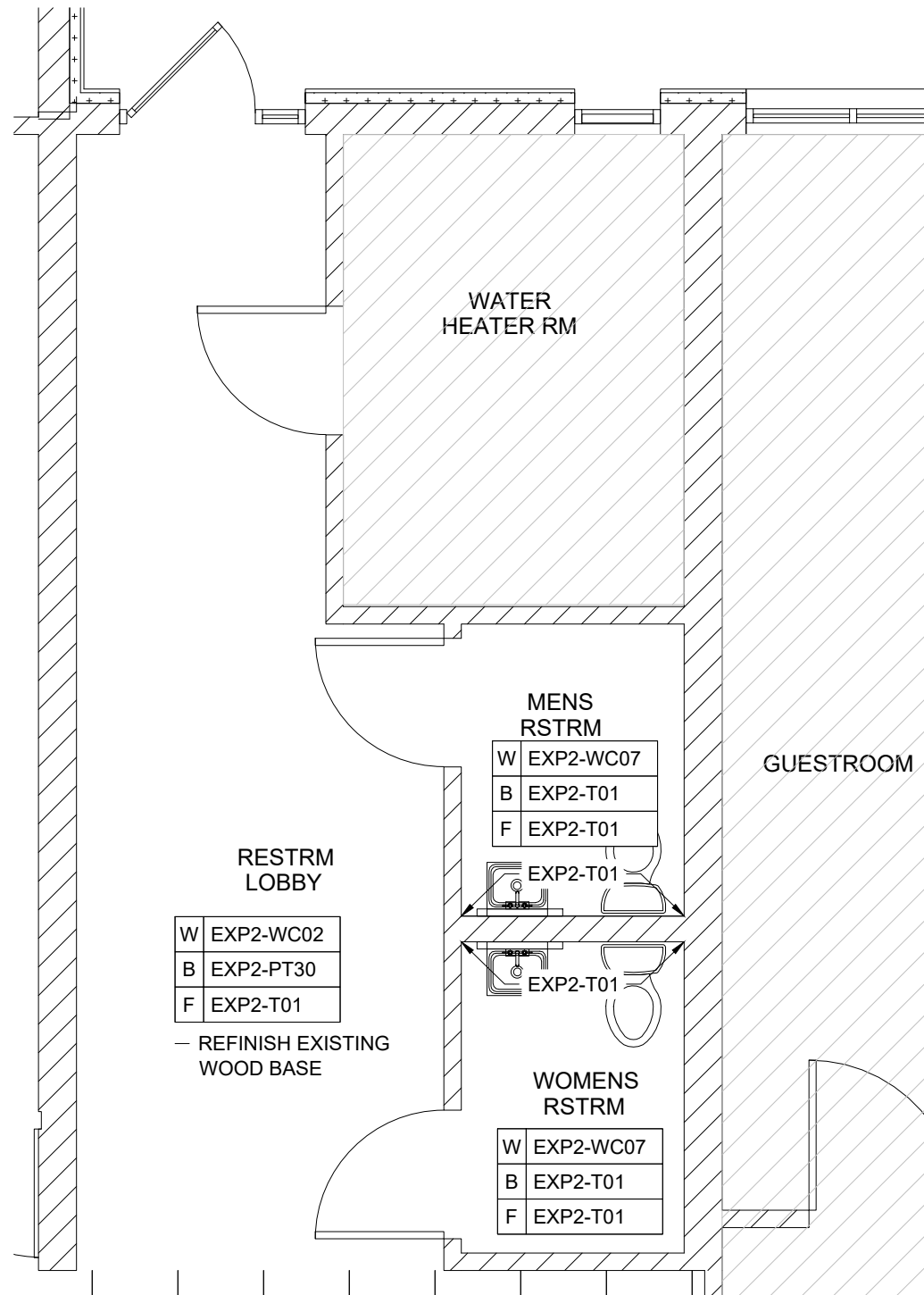
CORRIDOR

W	EXP2-WC02	
B	EXP2-PT30	REFINISH EXISTING WOOD BASE
F	EXP2-T01	

01 MEETING ROOM
 SCALE: 1/4" = 1' - 0"



01 **FITNESS CENTER**
SCALE: 1/4" = 1' - 0"



02 **PUBLIC RESTROOM**
SCALE: 1/4" = 1' - 0"



CARVER & ASSOCIATES
HOSPITALITY CONTRACT SERVICES
153 WEST ELLIS ROAD
GRIFFIN, GEORGIA 30223
770.233.9799
CARVERASSOC.COM

PROJECT: **HOLIDAY INN EXPRESS & SUITES**
CHARLOTTE-CONCORD I-85
7772 GATEWAY LANE NW., CONCORD, NC 28027
InnCODE: CNCNC

DRAWN BY: SL
DATE: 03.27.26
REV. 1 DATE: --
REV. 2 DATE: --
REV. 3 DATE: --
REV. 4 DATE: --

SHEET TITLE:
FINISH PLAN

SHEET NO.:
ID3.04

PHASE:
BRAND SUBMITTAL



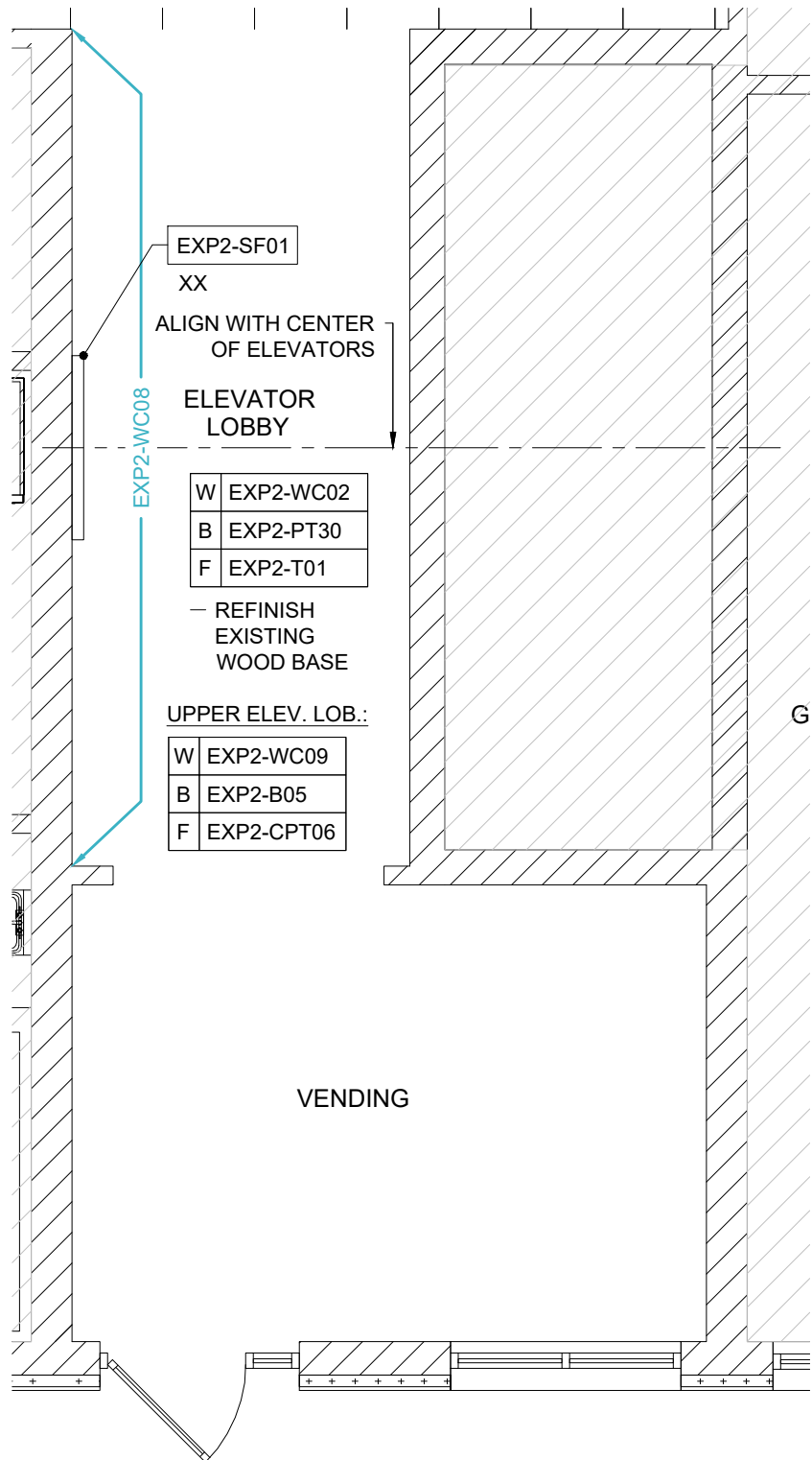
CARVER & ASSOCIATES
 HOSPITALITY CONTRACT SERVICES
 153 WEST ELLIS ROAD
 GRIFFIN, GEORGIA 30223
 770.233.9799
 CARVERASSOC.COM

PROJECT: **HOLIDAY INN EXPRESS & SUITES**
CHARLOTTE-CONCORD I-85
 7772 GATEWAY LANE NW., CONCORD, NC 28027
 InnCODE: CNCNC

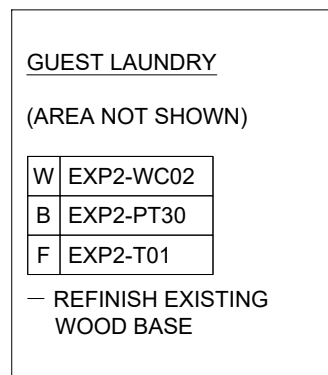
DRAWN BY: SL
 DATE: 03.27.26
 REV. 1 DATE: --
 REV. 2 DATE: --
 REV. 3 DATE: --
 REV. 4 DATE: --
 SHEET TITLE:

FINISH PLAN

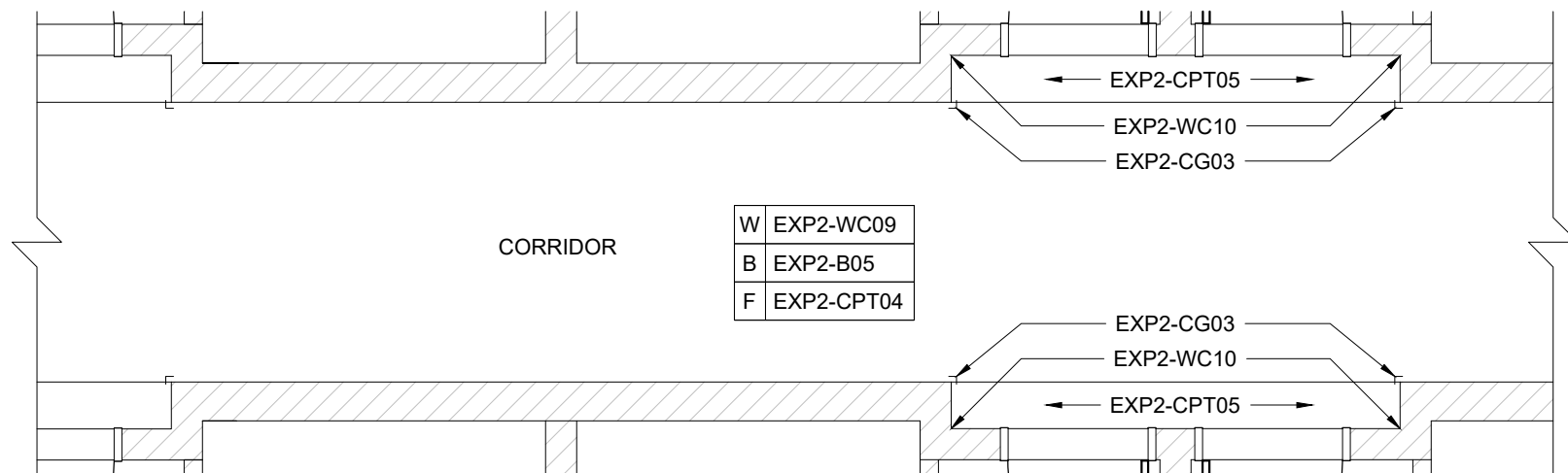
SHEET NO.:
ID3.05
 PHASE:
 BRAND SUBMITTAL



01 ELEVATOR LOBBY
 SCALE: 1/4" = 1' - 0"



03 GUEST LAUNDRY
 SCALE: 1/4" = 1' - 0"



02 CORRIDOR
 SCALE: 1/4" = 1' - 0"



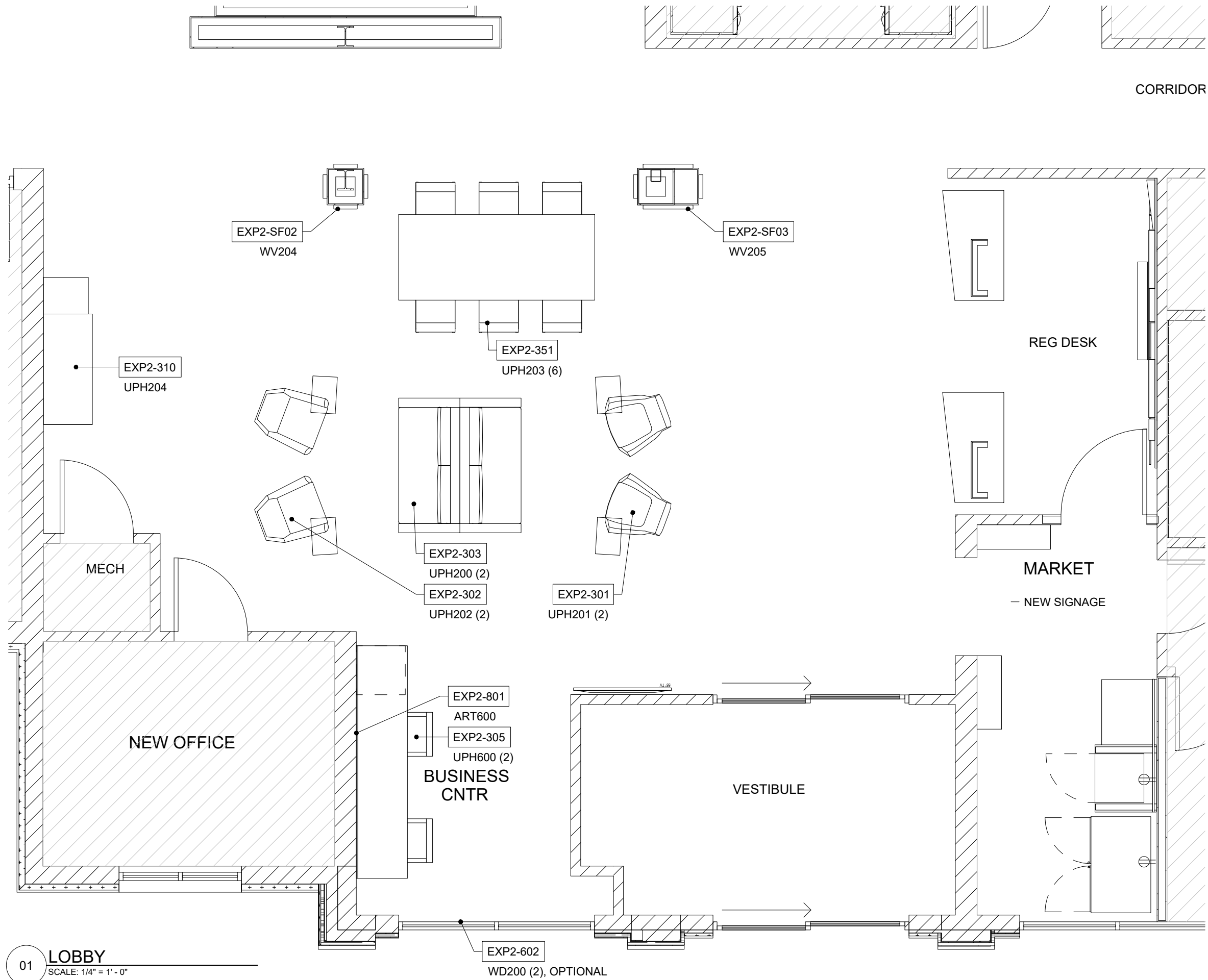
CARVER & ASSOCIATES
 HOSPITALITY CONTRACT SERVICES
 153 WEST ELLIS ROAD
 GRIFFIN, GEORGIA 30223
 770.233.9799
 CARVERASSOC.COM

PROJECT: **HOLIDAY INN EXPRESS & SUITES**
CHARLOTTE-CONCORD I-85
 7772 GATEWAY LANE NW., CONCORD, NC 28027
 InnCODE: CNCNC

DRAWN BY:	SL
DATE:	03.27.26
REV. 1 DATE:	--
REV. 2 DATE:	--
REV. 3 DATE:	--
REV. 4 DATE:	--
SHEET TITLE:	

FURNITURE PLAN

SHEET NO.:
ID4.21
 PHASE:
 BRAND SUBMITTAL



01 **LOBBY**
 SCALE: 1/4" = 1' - 0"



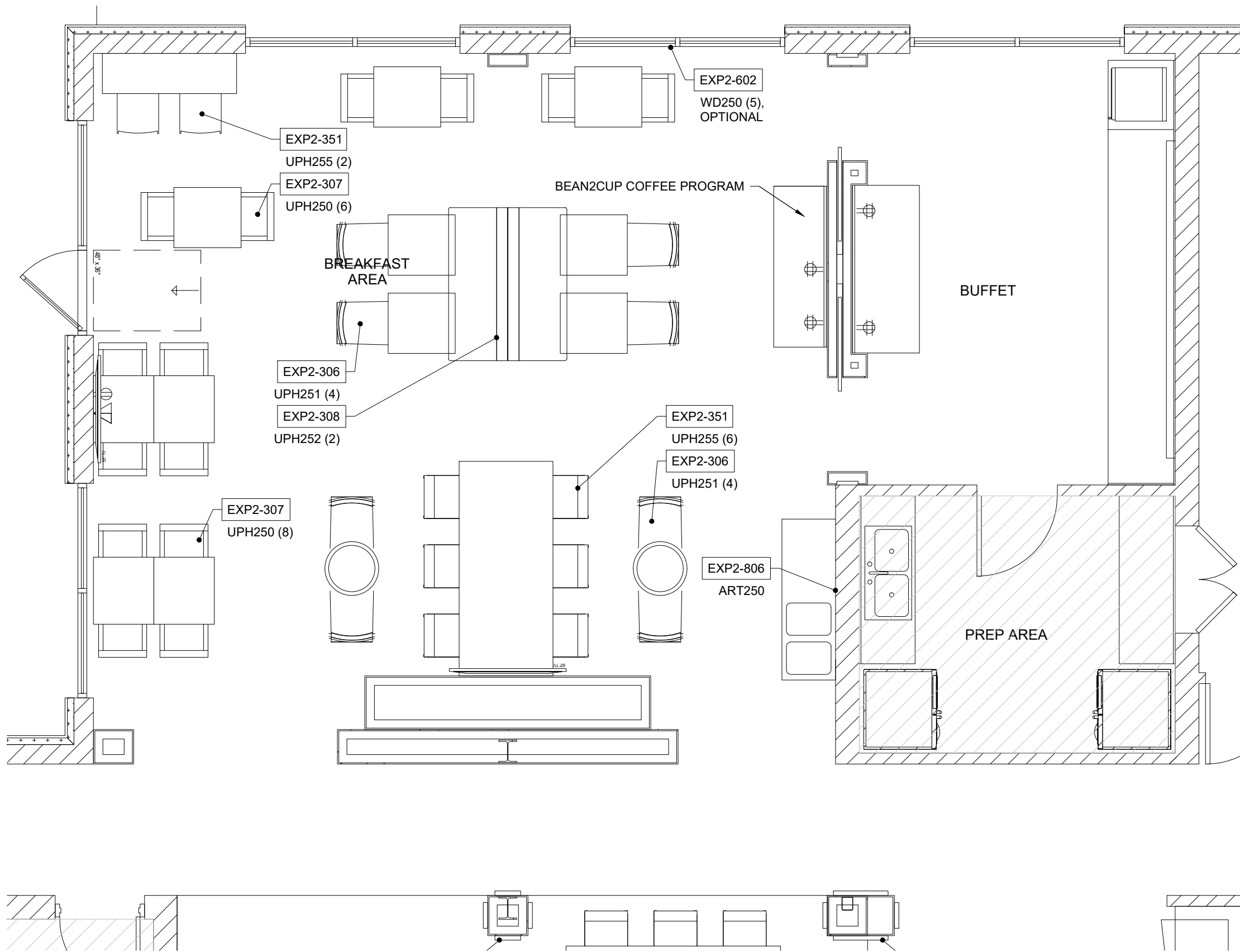
CARVER & ASSOCIATES
 HOSPITALITY CONTRACT SERVICES
 153 WEST ELLIS ROAD
 GRIFFIN, GEORGIA 30223
 770.233.9799
 CARVERASSOC.COM

PROJECT: **HOLIDAY INN EXPRESS & SUITES**
CHARLOTTE-CONCORD I-85
 7772 GATEWAY LANE NW., CONCORD, NC 28027
 InnCODE: CNCNC

DRAWN BY: SL
 DATE: 03.27.26
 REV. 1 DATE: --
 REV. 2 DATE: --
 REV. 3 DATE: --
 REV. 4 DATE: --
 SHEET TITLE:

FURNITURE PLAN

SHEET NO.: **ID4.22**
 PHASE: BRAND SUBMITTAL



POOL
(AREA NOT SHOWN)

EXP2-1127	CS551 (4)
EXP2-1187	CS552
EXP2-1138	CS553 (4)
EXP2-1185	MSC550
EXP2-1160	UMB550 (4)
EXP2-1162	UMB550B (4)
EXP2-1100	UPH550 (12)
EXP2-1102	UPH552 (4)

01 **BREAKFAST AREA**
 SCALE: 1/4" = 1' - 0"

02 **POOL**
 SCALE: 1/4" = 1' - 0"



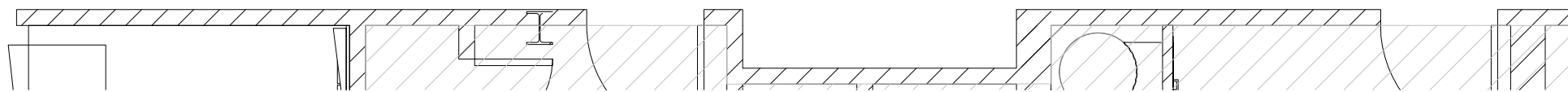
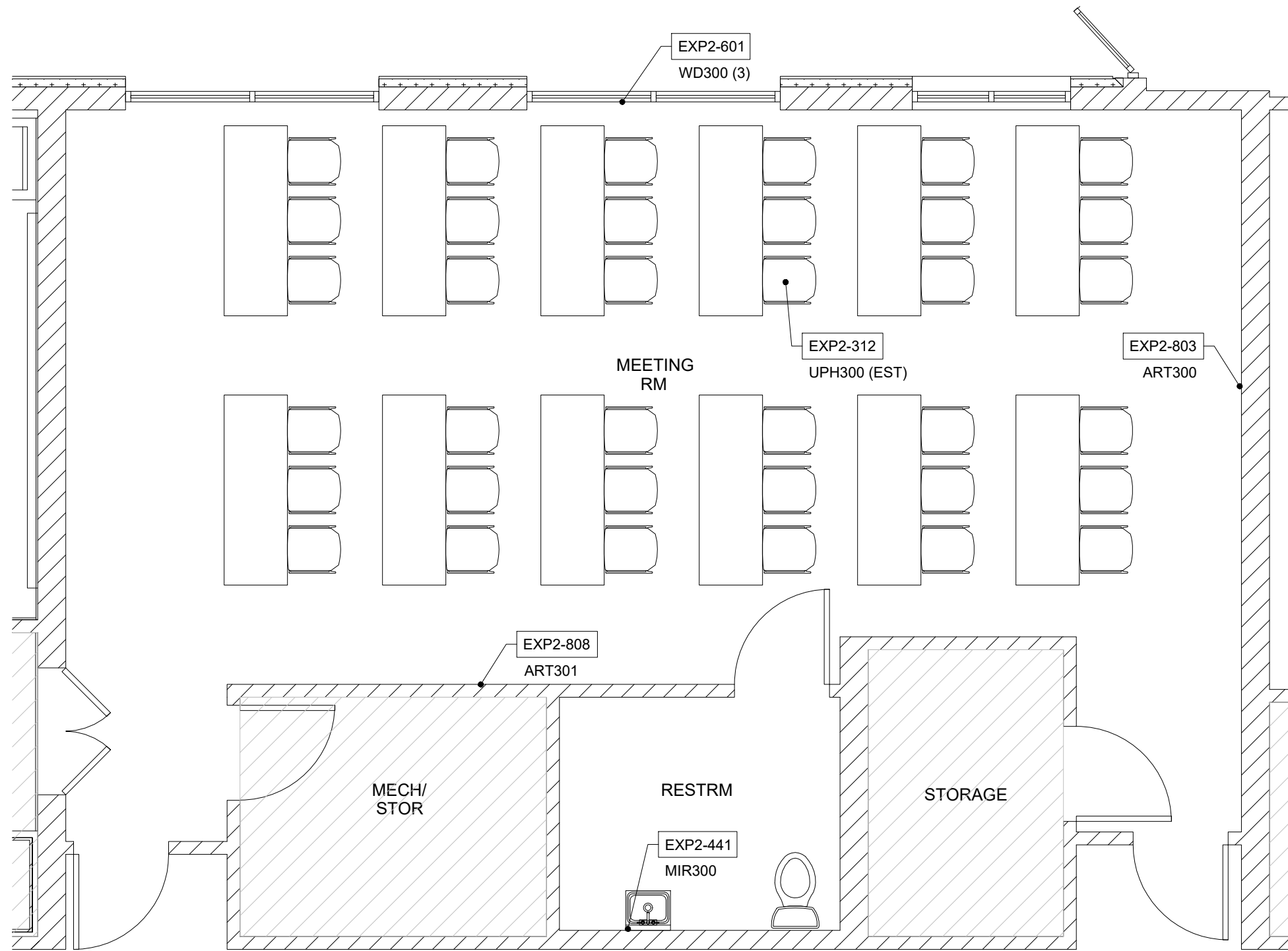
CARVER & ASSOCIATES
 HOSPITALITY CONTRACT SERVICES
 153 WEST ELLIS ROAD
 GRIFFIN, GEORGIA 30223
 770.233.9799
 CARVERASSOC.COM

PROJECT: **HOLIDAY INN EXPRESS & SUITES**
CHARLOTTE-CONCORD I-85
 7772 GATEWAY LANE NW., CONCORD, NC 28027
 InnCODE: CNCNC

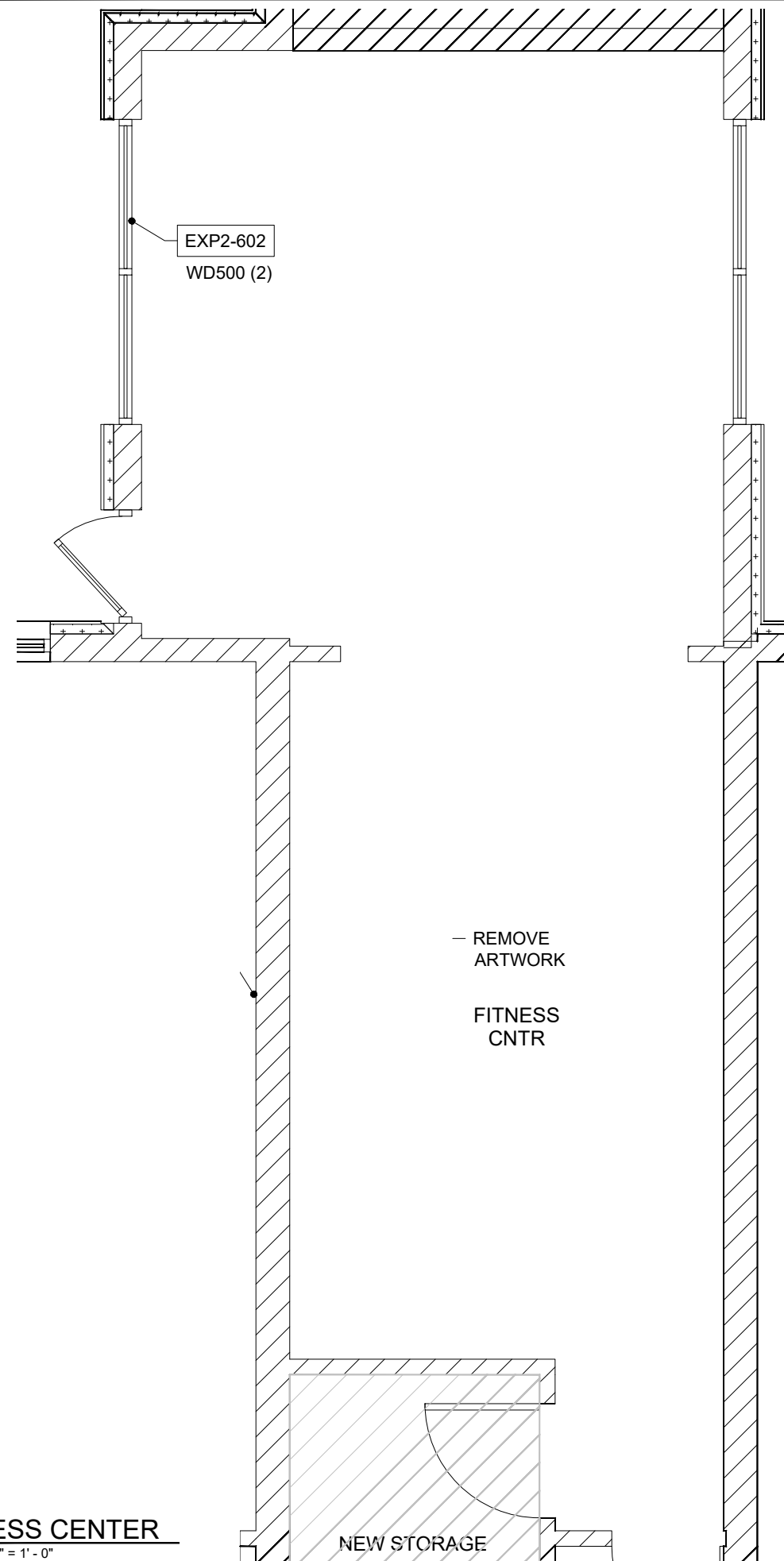
DRAWN BY:	SL
DATE:	03.27.26
REV. 1 DATE:	--
REV. 2 DATE:	--
REV. 3 DATE:	--
REV. 4 DATE:	--
SHEET TITLE:	

FURNITURE PLAN

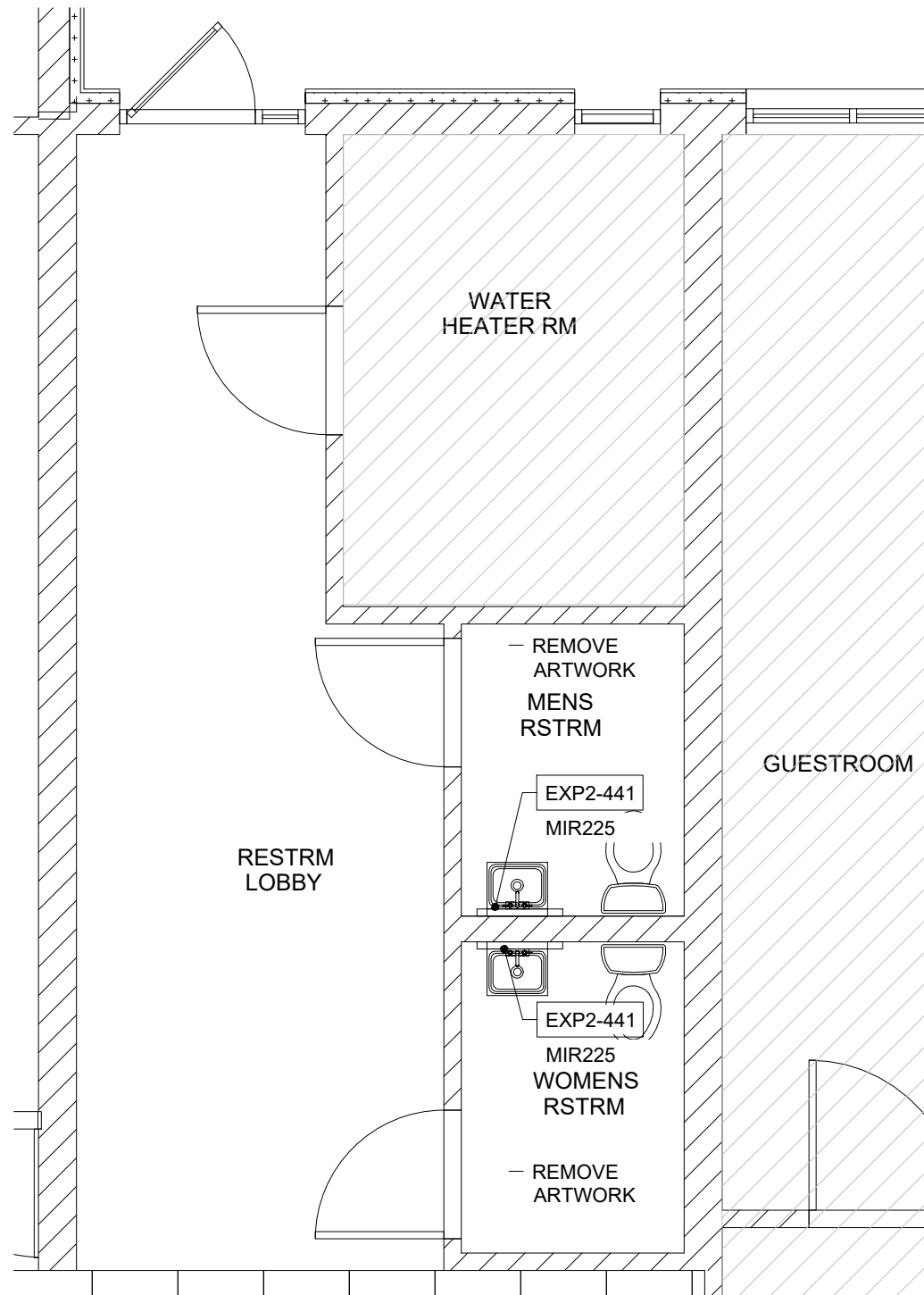
SHEET NO.:
ID4.23
 PHASE:
 BRAND SUBMITTAL



01 **MEETING ROOM**
 SCALE: 1/4" = 1' - 0"



01 **FITNESS CENTER**
SCALE: 1/4" = 1' - 0"



02 **PUBLIC RESTROOM**
SCALE: 1/4" = 1' - 0"



CARVER & ASSOCIATES
HOSPITALITY CONTRACT SERVICES
153 WEST ELLIS ROAD
GRIFFIN, GEORGIA 30223
770.233.9799
CARVERASSOC.COM

PROJECT: **HOLIDAY INN EXPRESS
& SUITES**
CHARLOTTE-CONCORD I-85
7772 GATEWAY LANE NW, CONCORD, NC 28027
InnCODE: CNCNC

DRAWN BY: SL
DATE: 03.27.26
REV. 1 DATE: --
REV. 2 DATE: --
REV. 3 DATE: --
REV. 4 DATE: --
SHEET TITLE:

**FURNITURE
PLAN**

SHEET NO.:
ID4.24

PHASE:
BRAND SUBMITTAL



CARVER & ASSOCIATES
 HOSPITALITY CONTRACT SERVICES
 153 WEST ELLIS ROAD
 GRIFFIN, GEORGIA 30223
 770.233.9799
 CARVERASSOC.COM

PROJECT: **HOLIDAY INN EXPRESS & SUITES**
CHARLOTTE-CONCORD I-85
 7772 GATEWAY LANE NW., CONCORD, NC 28027
 InnCODE: CNCNC

DRAWN BY: SL

DATE: 03.27.26

REV. 1 DATE: --

REV. 2 DATE: --

REV. 3 DATE: --

REV. 4 DATE: --

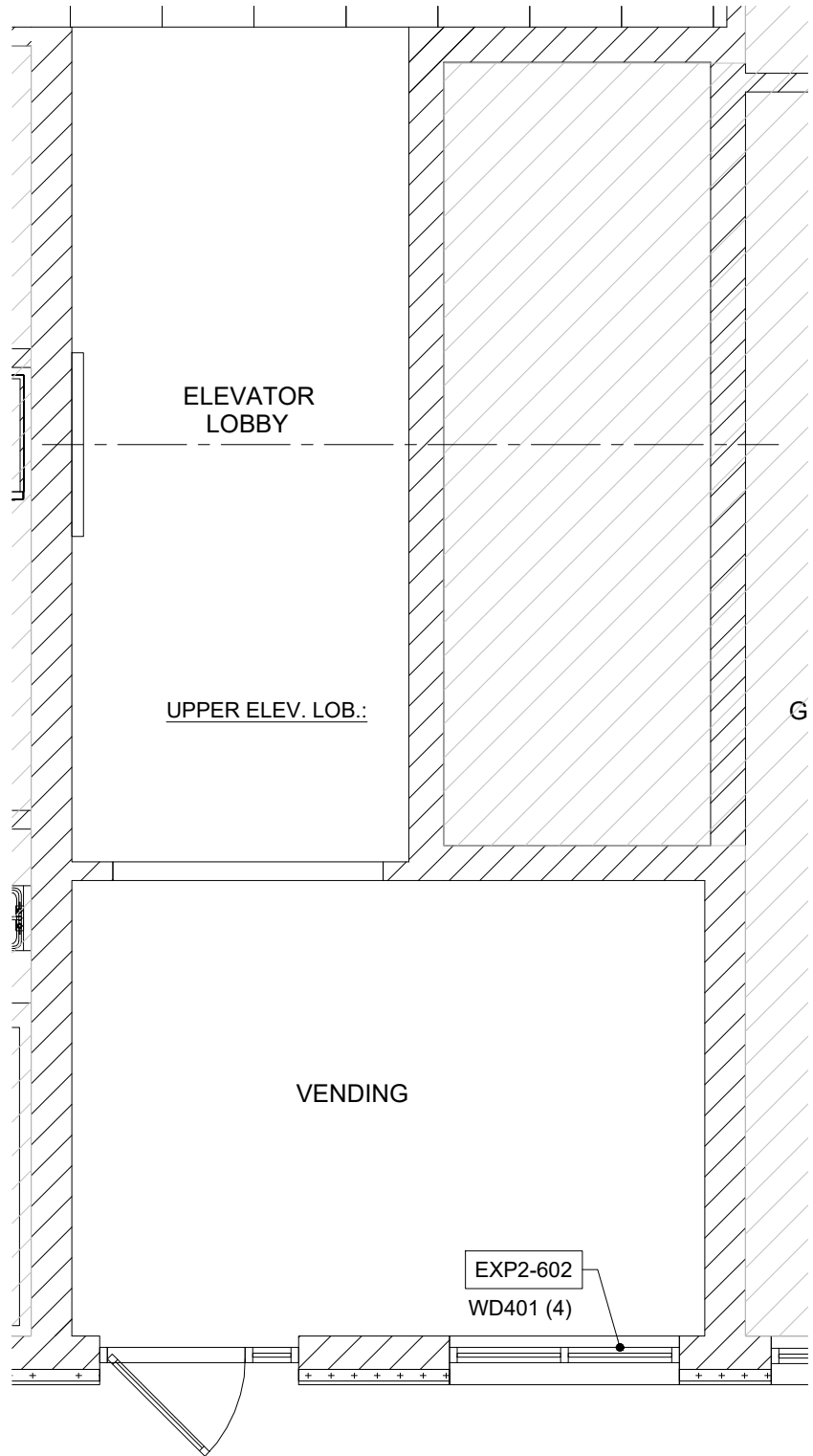
SHEET TITLE:

FURNITURE PLAN

SHEET NO.:

ID4.25

PHASE: **BRAND SUBMITTAL**

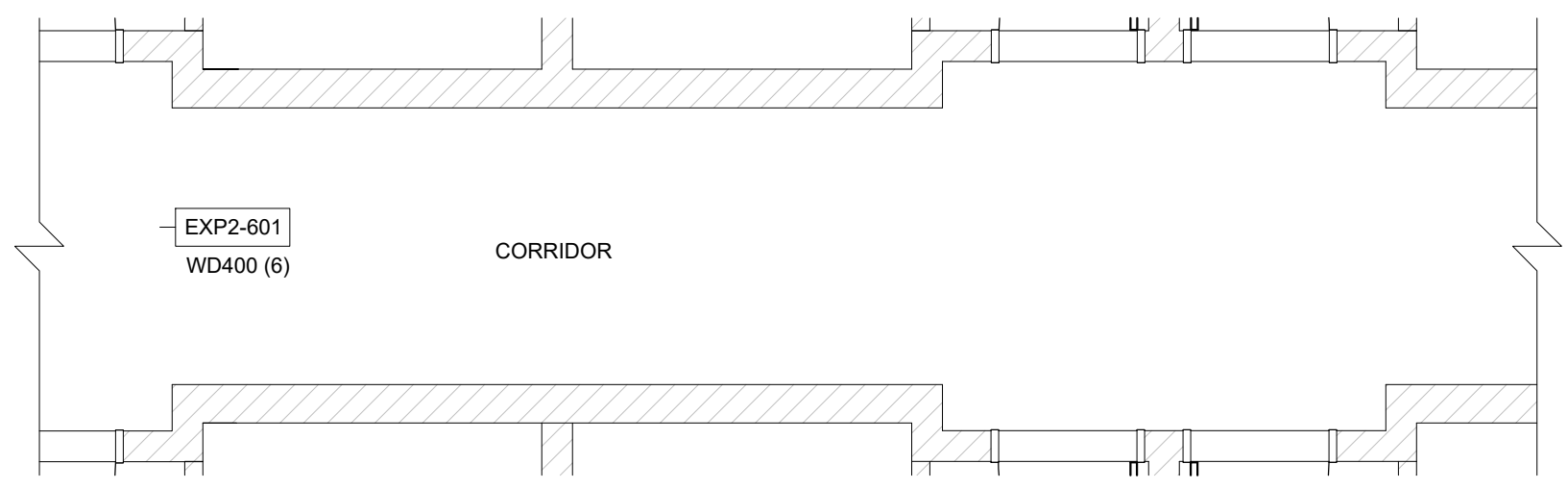


01 ELEVATOR LOBBY
 SCALE: 1/4" = 1' - 0"

GUEST LAUNDRY
 (AREA NOT SHOWN)

- REMOVE TABLE AND SEATING
- ADD NEW FOLDING TABLE

03 GUEST LAUNDRY
 SCALE: 1/4" = 1' - 0"



02 CORRIDOR
 SCALE: 1/4" = 1' - 0"